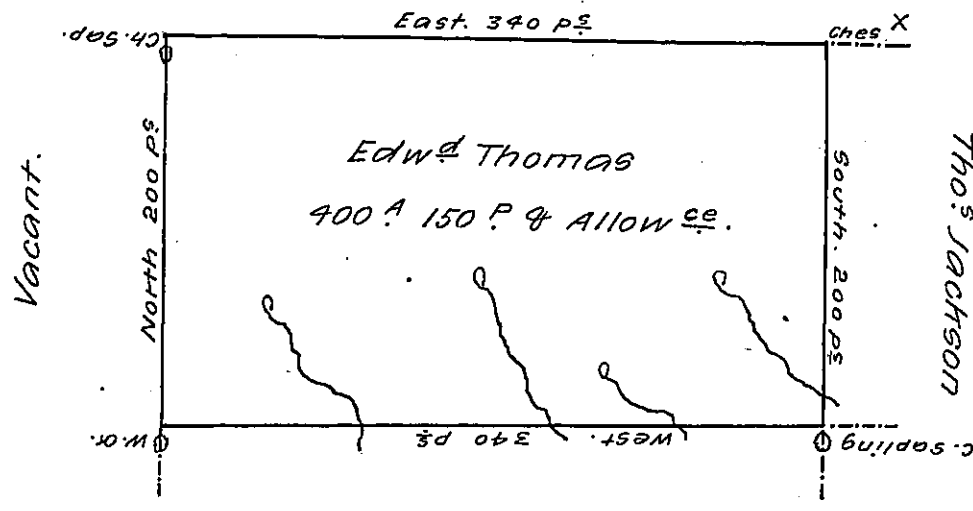


Vacant Land.



A Draught of a Tract of Land situate on the 'b 1.' of little
 Sugar Creek in the County of Luzerne, Containing Four hundred
 Acres, 150 perches & Allow^{ce} of six P.C. for Roads. Surveyed
 July 24th 1793 on a Warrant to Edward Thomas dated the
 13. Aug^r 1792.

Jo. J. Wallis. D.S.

To Dan^l. Brodhead. Esq.
 Surveyor General.

IN TESTIMONY that the above is a copy of the original remaining on file in
 the Department of Internal Affairs of Pennsylvania, made
 conformably to an Act of Assembly approved the 16th day of
 February 1833, I have hereunto set my hand and caused
 the Seal of said Department to be affixed at Harrisburg,
 this third day of April 1907.

Isaac B. Brown
 Secretary of Internal Affairs.